

## Edinburgh Festivals in August

C1

Create a massive influx of visitors citywide, extended nightlife, performances on streets and public spaces for venues, pop-ups, and bars



## Christmas & Hogmanay street events

C2

Attract more visitors and are organised on Princes Street Gardens and central public space, culminating in fireworks



## International Rugby Events at Murrayfield

C3

The match attracts thousands of visitors arriving for short periods of time



## Major Music Concerts

C4

Major evening events at Murrayfield & Princes Street Gardens with large crowds and amplified sound



## Cruise Ship Arrivals

C5

Cruise ships arriving to Leith & South Queensferry create an influx of day visitors exploring central Edinburgh



## Sunny Day Crowds

C6

Sudden influx of day-trippers (locals and visitors) in Portobello, Meadows, Arthur's Seat, Cramond, or the Pentlands



## Rainy/Cold Weather during Peak Season

C7

If the weather is bad during peak season, visitors move indoors to cafes, museums, shops



## Peak Summer Tourism

C8

Tourists come to Edinburgh during June-July (non-festival period)



## Short-Term Lets

C9

There is an increase of short-term rental accommodation (Airbnb Growth)



## Expansion of Cafés, Bars & Restaurants

C10

Growing demand from visitors leads to more venues



## Walking Tours, Bus Tours, and Day Trips

C11

Frequent guided groups in Old Town and popular areas



## New Hotel or Attraction Developments

C12

New development planned to cater for growing tourism



## Increased Coach & Tour Bus Traffic

C13

Coaches parking near landmarks and residential streets



## Post-Event Waste & Clean-Up

C14

Activities organised to clean up after a major event or festival



## Visitor Pressure on Green Spaces

C15

More visitors are attracted to Green Spaces, e.g., Meadows & Calton Hill



## Rise of Instagram Tourism

C16

Visitors seeking photogenic spots and influence hotspots, e.g., Victoria Street, Circus Lane, Dean Village





## Vibrant atmosphere & cultural pride

1

Residents enjoy vibrant atmosphere that comes with the event and feel cultural pride for the city



## Civic pride & visibility for Edinburgh

2

Residents feel like proud citizens of Edinburgh and enjoy its visibility internationally



## Enjoyable festive atmosphere & activities

3

Residents feel nice festive atmosphere and enjoy the activities that come with it



## Positive shared experiences & civic buzz

4

Residents have a feeling of shared experience and enjoy civic buzz



## Reduced sense of civic pride

5

Residents lose sense of civic pride



## Short-term boost for local businesses

6

Short-term boost for local businesses and small traders



## Boost for casual jobs

7

Boost for casual jobs and temporary workers



## Short-term boost in hospitality income

8

Hospitality industry experiences a short-term boost of income due to an event



## Seasonal retail & food opportunities

9

Retail and food industries see more opportunities in tourism peak season



## Increased income for pubs, hotels, taxis

10

Pubs, hotels and taxis see higher income with more visitors coming



## Higher spending in local shops & attractions

11

Visitors spend more in local shops, cafes and attractions



## Transport jobs & business for local guides

12

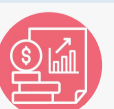
New tourist tours and activities create more transport jobs and business for local guides



## Increased local business exposure

13

Visitors increase local business exposure (e.g., through Instagram)



## Steadier income for tourism businesses

14

Off-peak tourism creates steadier income for tourism businesses and more consistent employment opportunities



## Job creation

15

New jobs are being created with the growth in tourism sector



## Boost for indoor businesses

16

A temporary influx of visitors indoors boosts indoor businesses





## Road closures & transport diversions

33

Road closures and public transport diversions create inconvenience for the residents



## Public transport demand spikes

34

Short-term influx of visitors creates spikes in demand for public transport



## Temporary traffic issues

35

It is harder to get around due to busy and slow traffic during the festive period



## Temporary parking issues

36

It is harder to park, especially in the central areas, during the festive period



## Increased coach & taxi traffic

37

There is in coach and taxi traffic transporting visitors who arrive by cruise ships or tour buses



## Overcrowding of residential lanes

38

Instagram-ready streets and walking tours draw in crowds to residential lanes



## Increased alcohol use

39

High alcohol use during the festival or before/after the event



## Antisocial behaviour around the event

40

Major events are accompanied by antisocial behaviour before/after the event



## Late-night noise

41

It is increasingly noisy late at night from extended nightlife & fireworks



## Daytime noise

42

Central areas are increasingly noisy during the day



## Noise for nearby residents

43

Noise disturbance and reduced tranquillity for nearby residents



## Construction noise & disruption

44

New development creates noise and local disruption in the area



## Difficult for locals to use green spaces

45

Increased numbers of visitors going to green spaces make it difficult and less enjoyable for locals to use public parks



## Increased wear on public areas

46

Increase numbers of visitors wear out public areas



## Barbecues in parks

47

Increased numbers of barbecues in parks create disturbance for locals and can be a fire hazard



## Environmental damage

48

Increased numbers of visitors going to green spaces create risks of environmental damage





## Economic vitality for tourism sector

17

Growing popularity of Edinburgh as a tourist destination improves economic vitality for tourism sector



## Air pollution spikes

21

Influx of visitors, e.g., tourist couches, creates a temporary spike in air pollution



## Crowded public transport

25

It is harder to get around for residents due to crowded public transport, creating local transport delays



## Rental value increase

29

There is an increase in long-term rental values in areas that attract more tourists



## Outdoor events & attractions see reduced activity

18

A temporary drop in visitor numbers leads to reduced participation in outdoor events and attractions



## Community clean-up initiatives

22

There is an opportunity for community-organised clean-up initiative after the event



## Residential flats converted for visitors

26

There is an increase in residential flats converted into visitor accommodation



## Rising cost of living

30

When lots of visitors come, prices in shops, cafés, and housing can rise – increasing the cost of living for people who live here year-round



## Increased litter

19

Increased litter and overflowing bins in specific areas



## Temporary odour problems

23

Increased litter creates temporary odour problems



## Loss of long-term rental housing

27

Long-term rental housing stock is reduced due to the growth of short-term lets (visitor accommodation)



## Reduced mobility for residents in central areas

31

It is harder to get to central area for residents due to road closures and diversions in the central areas



## Clean-up issues

20

Issues with arranging and completing clean-up after a major event or festival on time



## Rent & Airbnb prices spike temporarily

24

Rent and Airbnb prices are higher than average due to a major event or festival



## Property value increase

28

There is an increase in property values in areas that attract more visitors



## Heavy pedestrian congestion

32

Pedestrian streets are increasingly busy, especially in the city centre and narrow streets, creating crowd management pressures





## Erosion & path damage

49

Increased numbers of visitors going to green spaces erode and damage footpaths



## Relief for residents in outdoor areas

50

An influx of visitors to indoor areas brings relief for residents outdoors



## Loss of local character or green space

51

Increased numbers of visitors lead to a loss of local character of an area of green space



## More awareness of environmental protection needs

52

Environmental damage in green spaces caused by increased visitor numbers raised awareness of the environmental protection needed



## Queues in cafes

53

Increased numbers of visitors create queues in cafes



## Overcrowding indoors

54

An influx of visitors to indoor areas leads to overcrowding and long queues indoors



## Reduced attendance of outdoor events

55

Outdoor events and attractions see reduced activity



## Reduced access to amenities for locals

56

Increased numbers of visitors make amenities less accessible for locals



## Improved amenities

57

Growing tourism industry prompts improvements in amenities



## Longer opening hours, especially in city centre

58

With an increase in the numbers of visitors, places stay open for longer hours, especially in the city centre



## More dining options & vibrant streets

59

With the expansion of food sector, local residents have more dining options and enjoy more vibrant streets



## Rising prices in local venues

60

Increase numbers of visitors lead to increased prices in local venues



## Crowded main attractions

61

Crowded Old Town and main attractions due to higher number of visitors



## More transient neighbours

62

More transient and less cohesive neighbours and less stable communities due to increased numbers of visitors



## Reduced privacy & tranquillity

63

Locals experience less privacy and reduced tranquillity due to an influx of tourists visitors



## New buildings replacing older community spaces

64

With new developments, new buildings replace old community spaces





## Complaints about obstruction

65

Residents complain about the obstruction from increased numbers of coaches



### Reduced respite for locals between busy periods

69

Extending the tourism season reduces periods of peace and quiet for locals



### Strain on council services & maintenance

73

The need to clean up the aftermaths of major events and festivals puts a strain on council services



### Wild card

Other positive or negative impact you have observed or are aware of

Describe the impact below:

## Temporary eyesore

66

The aftermaths of festivals (e.g., waste) creates temporary eyesore for locals



### Gradual "normalisation" of crowds year-round

70

High numbers of visitors gradually become "normalised"



### Wild card

Other positive or negative impact you have observed or are aware of

Describe the impact below:

### Wild card

Other positive or negative impact you have observed or are aware of

Describe the impact below:

## Erosion of "authentic" neighbourhood life

67

Increase numbers of visitors to a specific area lead to an erosion of "authentic" neighbourhood life



### Year-round visitor presence in public spaces & cafes

71

Visitors are seen in public spaces and cafes all year around



### Wild card

Other positive or negative impact you have observed or are aware of

Describe the impact below:

### Wild card

Other positive or negative impact you have observed or are aware of

Describe the impact below:

## Frustration from constant photography

68

An influx of visitors into Instagram-ready areas create frustration from constant photography & footfall



### Council maintenance costs rise

72

The cost of maintaining public and green spaces increases for the city council



### Wild card

Other positive or negative impact you have observed or are aware of

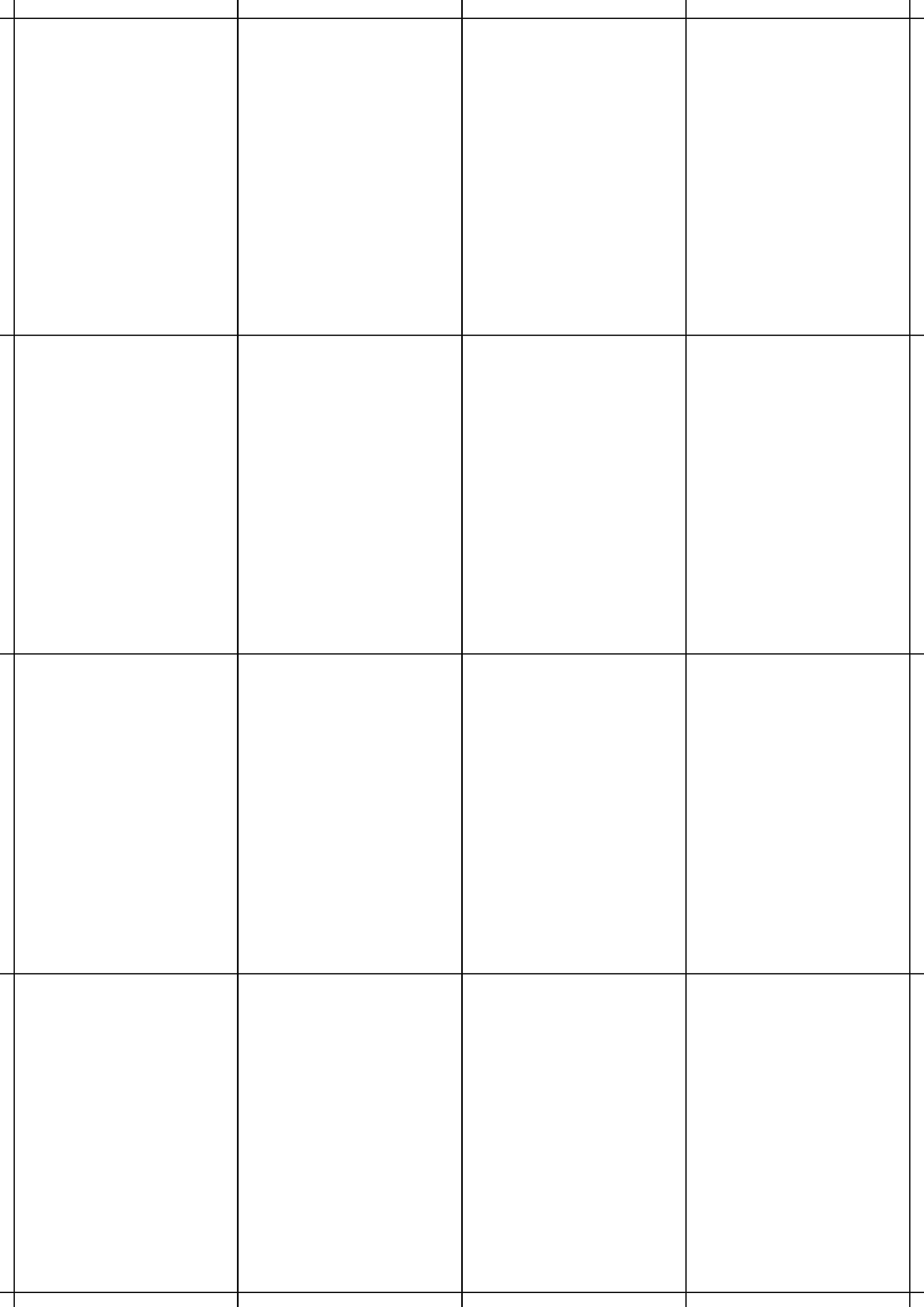
Describe the impact below:

### Wild card

Other positive or negative impact you have observed or are aware of

Describe the impact below:







**Player Instruction Card**

**4**



**Player Instruction Card**

**3**



**Player Instruction Card**

**2**



**Player Instruction Card**

**1**

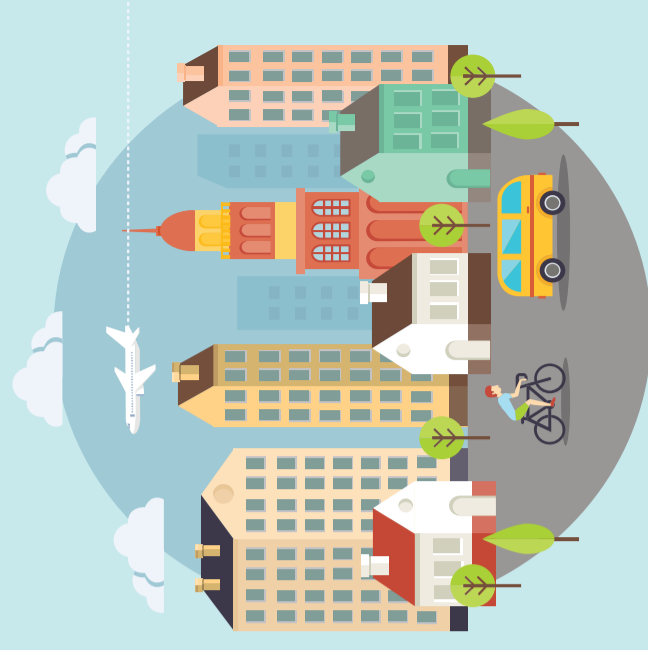


**Scoring Instruction Card**



**Player Instruction Card**

**6**



**Player Instruction Card**

**5**

## 1 Getting started

1. Read out to the group:

Edinburgh is one of the top tourist destinations in the UK. While it brings economic benefits, visitor-based economy brings its own challenges.

In this game, you will put together a Case Study aimed at presenting the impact of the tourism on local communities to the Edinburgh City Council.

You will all propose impact areas to be investigated and take it in turn to play the Chief Analyst Robin, who selects the most important evidence and writes a case study based on the examples presented by other analysts (players).

2. Show everyone the Robin and then ask Player 2 to read their instruction card.

## 2 Getting started

1. Read out to the group:

You have all been provided with a set of potential impacts that affected locals (in front of you). Some might be relevant to you or someone you know.

Look at them. You will use one of them in each round to provide evidence to the case.

2. Ask Player 3 to read their instruction card.

## 3 What is a case study?

1. Read out to the group:

You will each be given the opportunity to write a Case Study to present to the Edinburgh City Council.

You will name your case study, write a short description and provide a short concrete example of how tourism change has affected members of your community.

2. Show everyone the case study card and then ask Player 4 to read their instruction card.

## 4 Who is Chief Analyst Robin?

1. Read out to the group:

When you play the Chief Analyst Robin, you are commissioning an investigation into an impact area of your choice to the team of analysts by setting the context of the group's reflections. You do so by choosing a context card from the ones showing faced up on the board. When a context card has been selected, reveal another one from the deck. When you play the Chief Analyst Robin, you have special powers, listed on the card in front of you.

2. Show everyone the board with context cards and the card with Robin's powers, and then ask Player 5 to read their instruction card.

## 5 Building a case

1. Read out to the group:

How to build a case? Quite simply, through conversations and listening. Once the Chief Analyst Robin has selected a context for the discussion, all the other players will choose one card each from their impact cards in front of them to put forward. You can request an impact card from another analyst's hand, if it suits you better, or write your own on an Impact Wild Card.

When you have selected your impact card, the Robin will ask you to read the card to the group and give a concrete example from your own experience or experience of those you know as evidence of the impact. Others can contribute to the evidence with their own examples or ask questions.

2. Show everyone Impact Wild Cards, then place the Robin in front of Player 6 and ask Player 6 to read their instruction card.

## 6 Let's play

1. Select the first context card from the board and then read out to the group:

This is the first context we will look at. Select an impact card, put it in the middle of the table and be ready to present your example as evidence.

I will then decide which impact should be presented after a group discussion and write the case study on my case study card.

2. Wait for everyone to select their impact cards and put them in the middle. Then ask the players one by one to read their impact card and present their evidence.
3. After everyone has presented, select the impact card with the strongest evidence, take a case study template and write your case. Ask others to help you to construct the case.

## Assessing your evidence

1. Read out to the group:

Go through the selected Impact and Context cards one by one and move the counters for each category of impact.

This scoreboard represents the breadth of your evidence. Are you satisfied with it? Now as a group you have an opportunity to write one final case study to address any gaps you might have identified. What would that be?

2. Take a case study template and write collectively one final case study.

Workshop ID: \_\_\_\_\_

## Case study

Context card:

Proposed impact cards:

Selected impact card(s):

Concrete example of impact in the selected context:

Workshop ID: \_\_\_\_\_

## Case study

Context card:

Proposed impact cards:

Selected impact card(s):

Concrete example of impact in the selected context:

Workshop ID: \_\_\_\_\_

## Case study

Context card:

Proposed impact cards:

Selected impact card(s):

Concrete example of impact in the selected context:

Workshop ID: \_\_\_\_\_

## Case study

Context card:

Proposed impact cards:

Selected impact card(s):

Concrete example of impact in the selected context:

Workshop ID: \_\_\_\_\_

## Case study

Context card:

Proposed impact cards:

Selected impact card(s):

Concrete example of impact in the selected context:

Workshop ID: \_\_\_\_\_

## Case study

Context card:

Proposed impact cards:

Selected impact card(s):

Concrete example of impact in the selected context:

Workshop ID: \_\_\_\_\_

## Case study

Context card:

Proposed impact cards:

Selected impact card(s):

Concrete example of impact in the selected context:

Workshop ID: \_\_\_\_\_

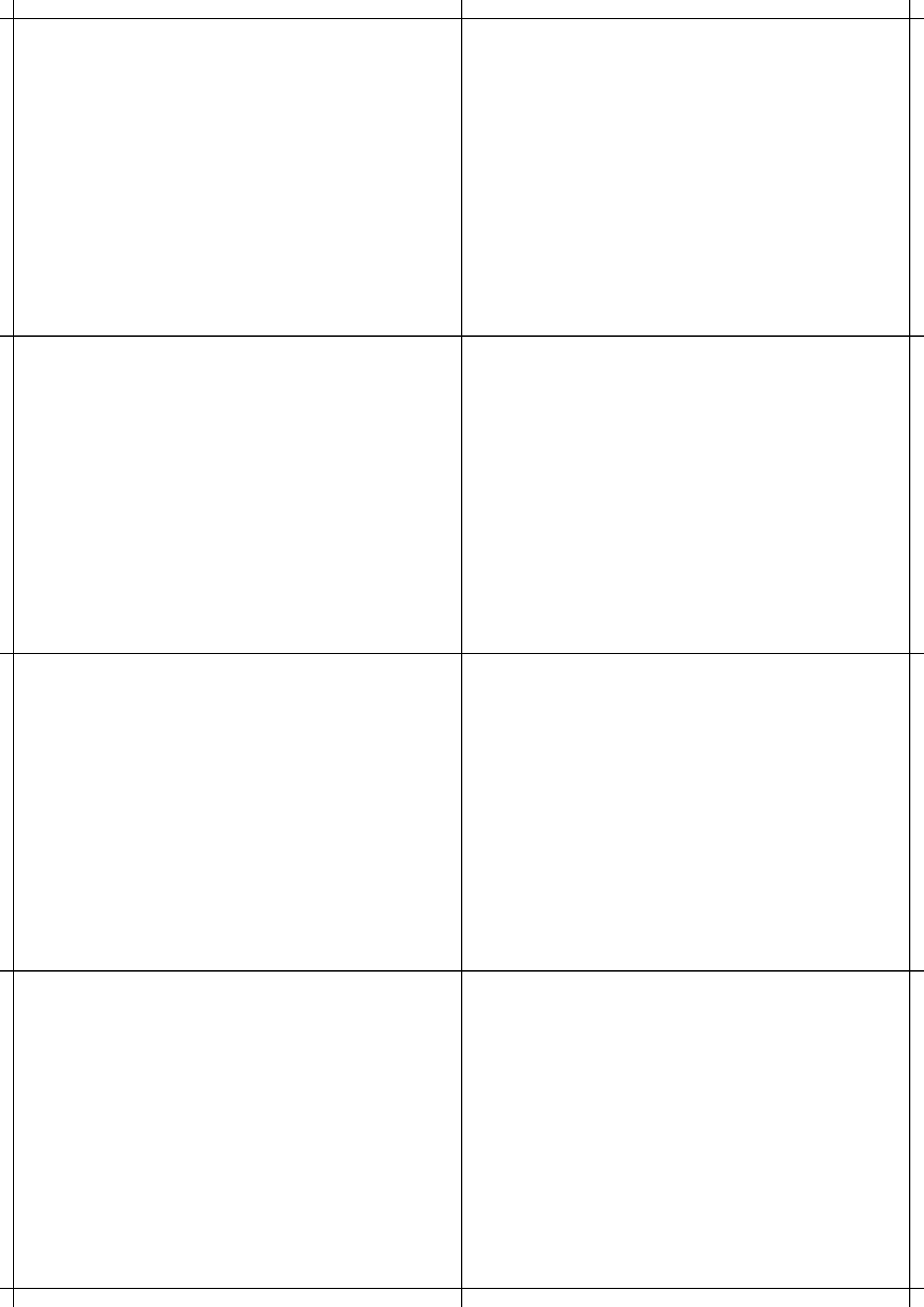
## Case study

Context card:

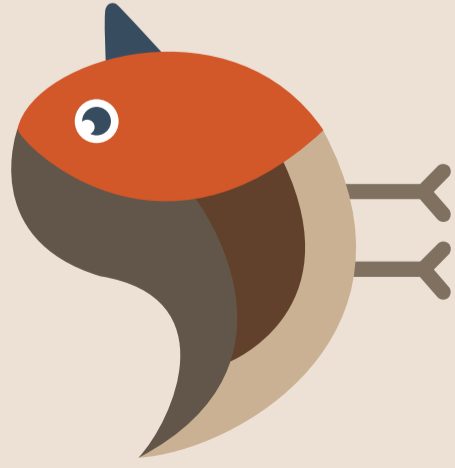
Proposed impact cards:

Selected impact card(s):

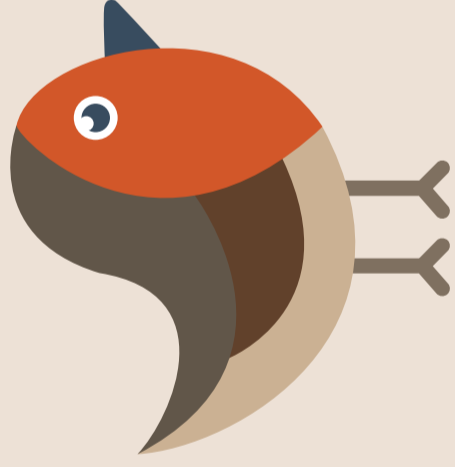
Concrete example of impact in the selected context:



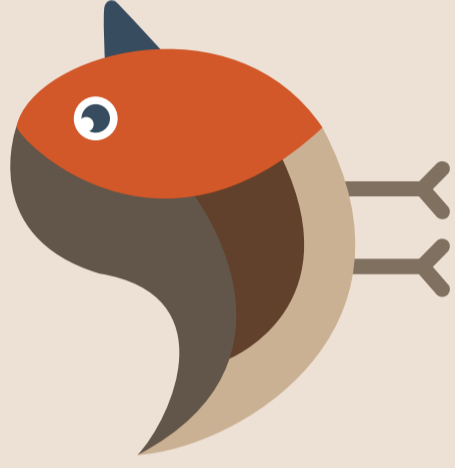
Chief Analyst  
Robin's  
Powers



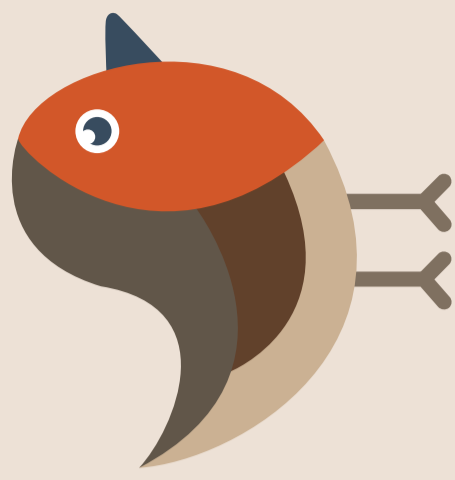
Chief Analyst  
Robin's  
Powers



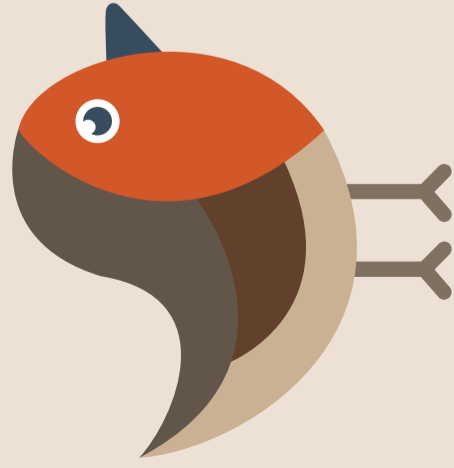
Chief Analyst  
Robin's  
Powers



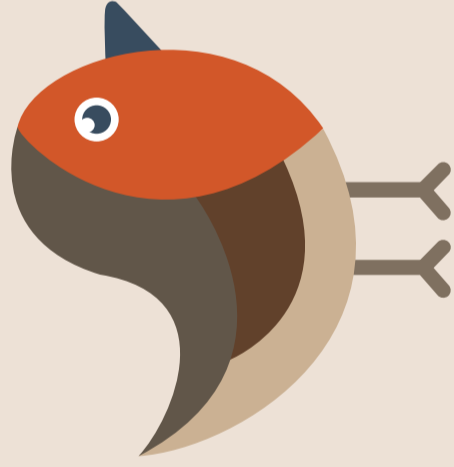
Chief Analyst  
Robin's  
Powers



Chief Analyst  
Robin's  
Powers



Chief Analyst  
Robin's  
Powers



## Quick rules

### 1. Introduction

Briefly introduce the game and ask players to follow numbered instruction cards.

### 2. Building case studies

- The Robin selects a context card
- Other analysts select one impact card each as their evidence
- The Robin asks each analyst to present their evidence supported by a real example
- The Robin selects the most relevant impact card and writes a case study
- The Robin token moves to the next player and the game continues for 6 rounds

### 3. Scoring

Briefly summarise the impact areas chosen by players. Explain case study area selection to the players (tokens on the case study board). As the players to score the impact areas based on the icons on the context and impact cards they have selected.

### 4. The final case study

Ask the players to reflect how representative their evidence is of the broad range of impacts. Invite them to write collectively the final case study, if they would like to address any gaps in their evidence.

# Robin's powers

1. If the Robin asks, answer.

2. If the Robin has heard enough, be quiet.

3. The Robin's decision is final.

4. If the Robin says it is allowed, then it is allowed.

# Robin's powers

1. If the Robin asks, answer.

2. If the Robin has heard enough, be quiet.

3. The Robin's decision is final.

4. If the Robin says it is allowed, then it is allowed.

# Robin's powers

1. If the Robin asks, answer.

2. If the Robin has heard enough, be quiet.

3. The Robin's decision is final.

4. If the Robin says it is allowed, then it is allowed.

# Robin's powers

1. If the Robin asks, answer.

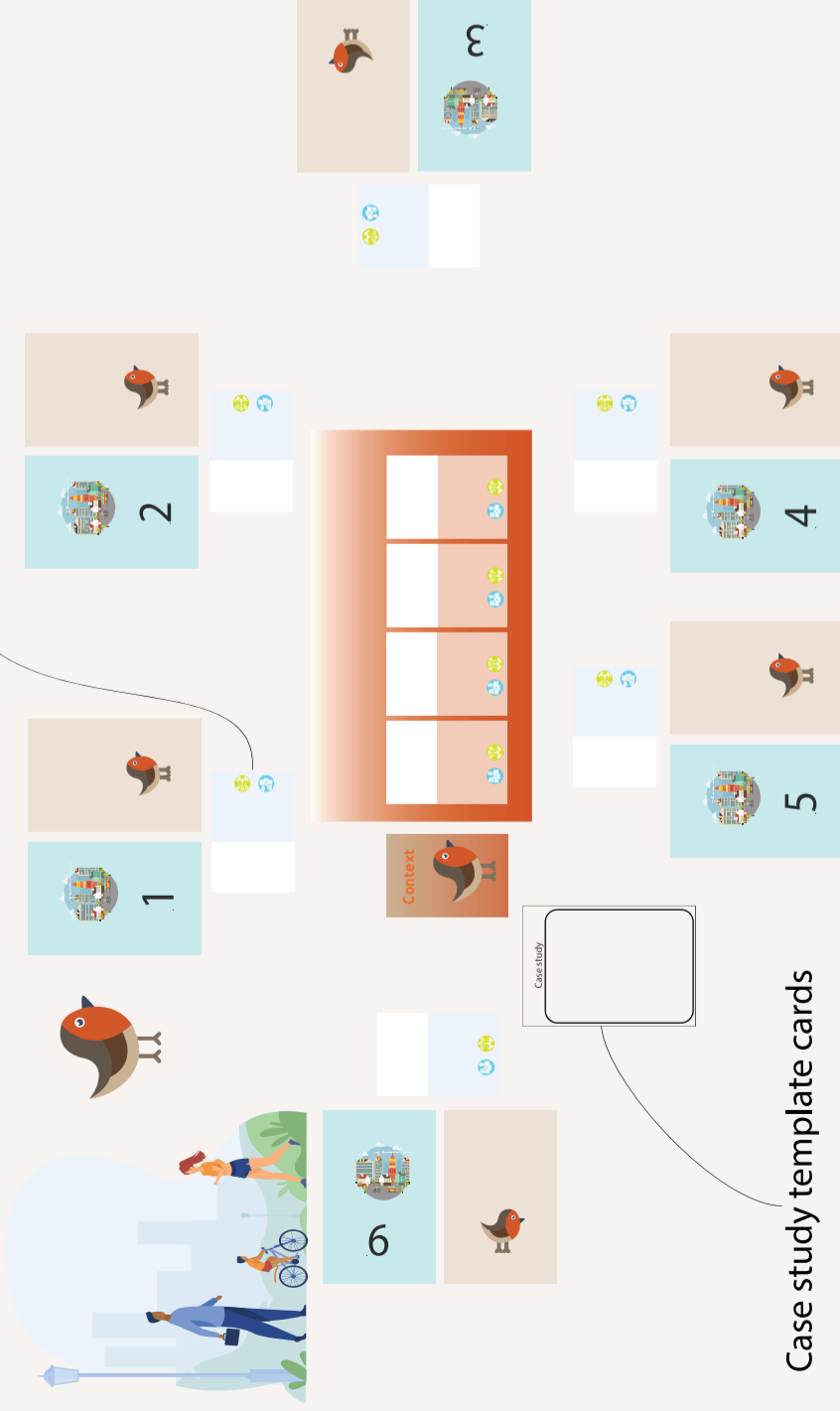
2. If the Robin has heard enough, be quiet.

3. The Robin's decision is final.

4. If the Robin says it is allowed, then it is allowed.

## Game setup

Impact cards divided between all players (6-8 cards) + 2 wild cards per player



# Robin's powers

1. If the Robin asks, answer.

2. If the Robin has heard enough, be quiet.

3. The Robin's decision is final.

4. If the Robin says it is allowed, then it is allowed.

# Robin's powers

1. If the Robin asks, answer.

2. If the Robin has heard enough, be quiet.

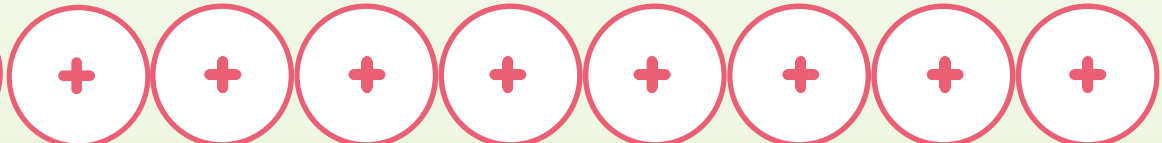
3. The Robin's decision is final.

4. If the Robin says it is allowed, then it is allowed.

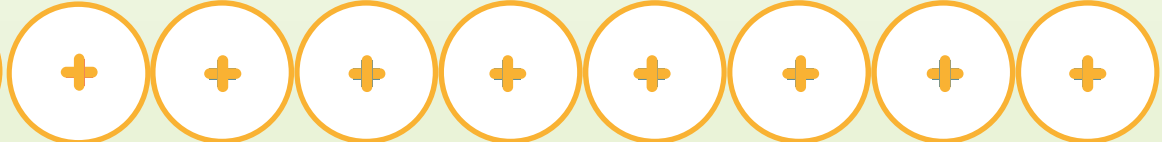
Case study template cards


# Impact Assessment

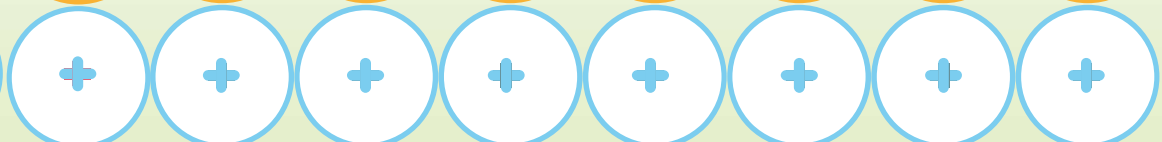
Thriving Visitor Economy



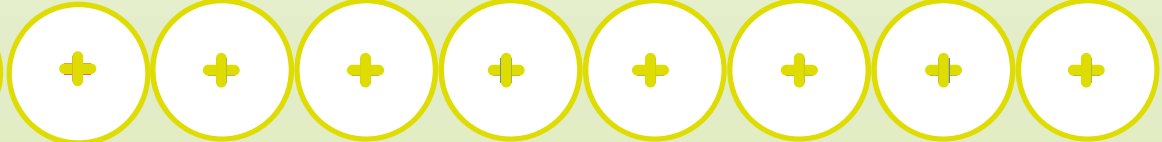
Fair Work, More & Better Jobs



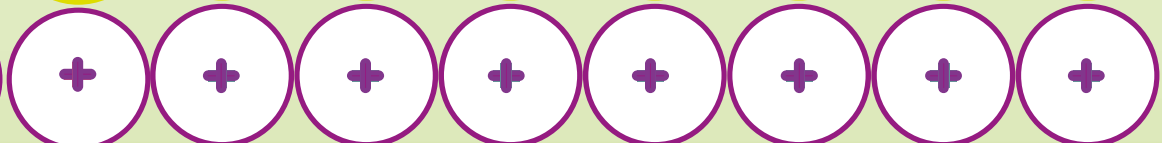
Ongoing Investment in the City



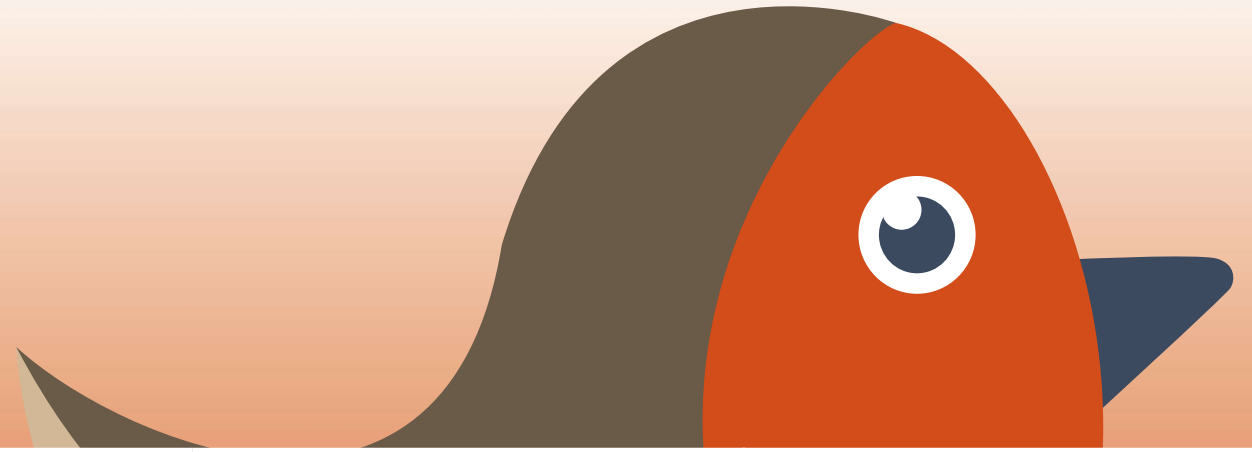
Toward Net Zero



Better Quality of Life (for residents)



# Context



Context

Context

Context

Context



Thriving Visitor  
Economy



Fair Work, More  
& Better Jobs



Ongoing Investment  
in the City



Toward  
Net Zero



Better Quality of Life  
(for residents)

